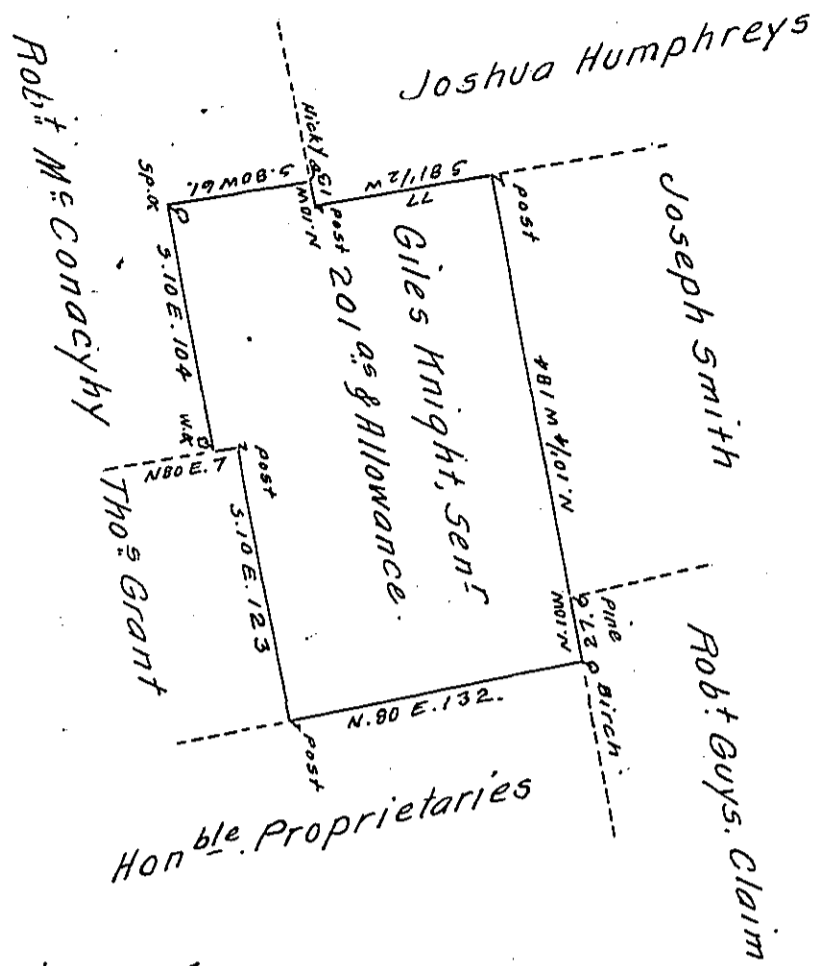


" 2.11  
123  
88



A Draught of A Tract of Land Call'd Pine Thicket. Situate Adjoin-  
ing the Proprietary Mannor in Muncy Township in the County of  
Northumberland, Survey'd by Charles Lukens on the 19<sup>th</sup> day of  
June 1774 as Appears by his Draughts and Field works, and Resurv-  
ey'd by me on the Second day of June 1784, for Giles Knight Senr in  
Pursuance of his Order N<sup>o</sup>. 2258, bearing date the third day of April  
1769. Containing Two Hundred and One Acres with Allowance of Six  
# Ct for Roads.

\* say N<sup>o</sup> 2558.

To John Lukens Esq<sup>r</sup> }  
Surveyor Gen<sup>l</sup>

Jo. J. Wallis D. S.

IN TESTIMONY that the above is a copy of the original remaining on file in  
the Department of Internal Affairs of Pennsylvania, made  
conformably to an Act of Assembly approved the 16th day of  
February, 1833, I have hereunto set my Hand and caused  
the Seal of said Department to be affixed at Harrisburg,  
this fifth day of August 1910.

*Henry Houch*  
Secretary of Internal Affairs.